

Vigor550

Wireless 11g USB Adapter

Quick Start Guide



Version 1.0

DrayTek



Check Your Package Contents

- ◆ Vigor550 Unit
- ◆ Vigor550 Quick Start Guide (This document)
- ◆ CD including Vigor550 User's Guide



Installing the Drivers from CD

 Please do NOT insert your Vigor550 before installing the driver.

1. Insert CD and select “Install Vigor550 Driver”



2. Click “Next” and “Yes” if you want to add a “DrayTek Wireless 11g USB Utility” shortcut to your desktop.
3. Click “Finish”.



Connecting Vigor550 to Your Computer

1. Remove the protective cap from Vigor550 and insert the Vigor550 into a USB port on your computer.

2. Select "Install the software automatically (Recommended)" and click "Next".

3. Click "Continue Anyway"

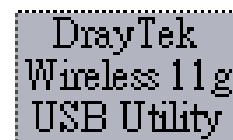
4. Click "Finish" to complete the installation.



Congratulations. Installation Complete.

To start wireless connection, if your operation system is XP, you may find the Zero Configuration has automatically loaded.

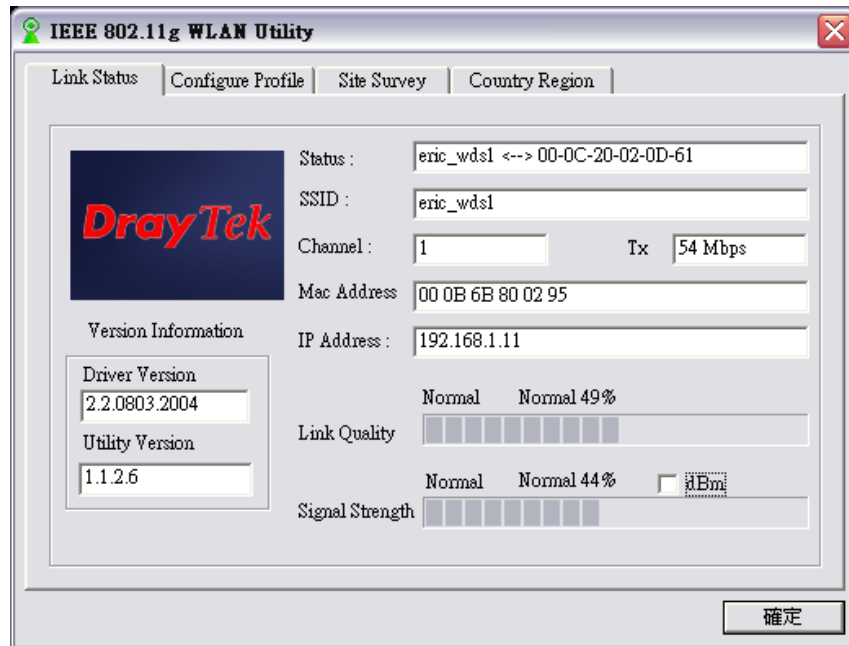
We suggest you to select DrayTek Wireless 11g USB Utility on desktop.



Use DrayTek Wireless 11g USB Utility

In **Site Survey** tab, click on the SSID you want to build connection with, and **Add Profile** if needed.

Then in **Link Status**, you will find as shown below:



- ◆ **Status** The MAC Address of the Access Point that Vigor550 associated with.
- ◆ **SSID** The Service Identifier of the wireless network.
- ◆ **Channel** The current channel based on the frequency.
- ◆ **Tx** The current data transmission rate.
- ◆ **MAC Address** The MAC Address of the Vigor550
- ◆ **IP Address** The IP Address of the Vigor550.
- ◆ **Link Quality** The link quality of the wireless connection.
- ◆ **Signal Strength** The signal strength of the wireless connection.

Technical Support

You can find User's Guide in the package CD.
Please log on our website www.draytek.com for
latest software updates
or contact us at support@draytek.com