
CHAPTER 11

Universal Plug and Play(UPnP) Service Setup

11.1 Introduction

The UPnP protocol is supported to bring to network connected devices the ease of installation and configuration which is already available for directly connected PC peripherals with the existing Windows 'Plug and Play' system.

For NAT routers, the major feature of UPnP on the Vigor router is “NAT Traversal”. This enables applications inside the firewall to automatically open the ports that they need to pass through a router. It is more reliable than requiring a router to work out by itself which ports need to be opened. Further, the user does not have to manually set up port mappings or a DMZ.

The screenshot shows a web-based configuration interface for a Vigor router. The title bar at the top reads "> Advanced Setup> UPNP Control Setup" in red text on the left and "<< Main Menu" in blue text on the right. The main content area has a light yellow background. At the top left of this area is the heading "UPNP Setup" in blue, and at the top right is a link "<< Back" in blue. Below the heading is a rectangular box containing three items, each with an unchecked checkbox and a blue text label: "Enable UPNP Service", "Enable Connection control Service", and "Enable Connection Status Service". Below this box is a note in brown text: "Note : If you intend running UPNP service inside your LAN, you should check the appropriate service above to allow control, as well as the appropriate UPNP settings." At the bottom of the interface are three buttons: "Cancel", "Clear", and "OK", each in a light blue box.

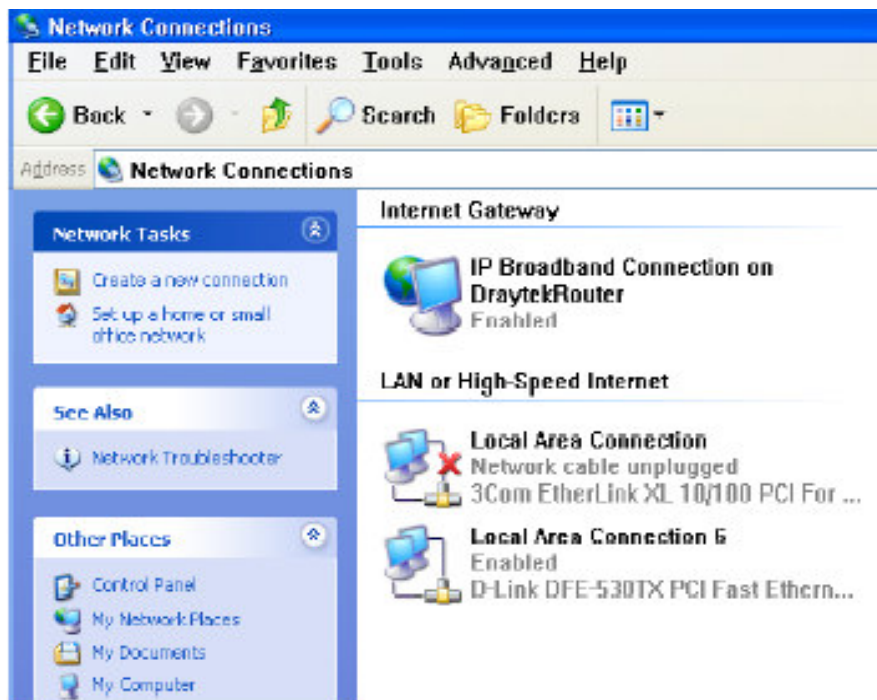
UPnP is available on Windows XP and the Vigor router provides the associated support for MSN Messenger to allow full use of the voice, video and messaging features.

11.2 Configuration

You can enter the **UPNP Setup** via **Advanced Setup > UPNP Service Setup** on the Web Configurator in your Vigor router

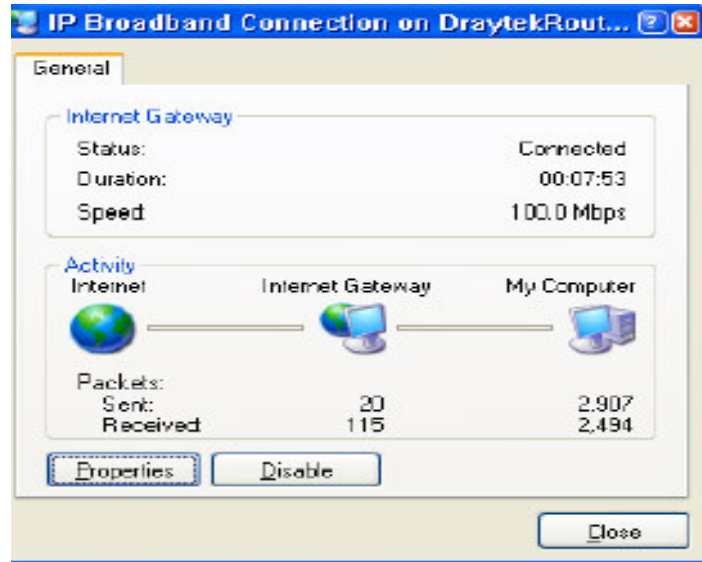
Enable UPNP Service. Accordingly, you can enable either the **Connection Control Service** or **Connection Status Service**.

Click the **IP Broadband Connection on DrayTek Router** on Windows XP/Network Connections, as shown below. The connection status and control status will be able to be activated.



The NAT Traversal of UPnP enables the multimedia features of your applications to operate. This has to manually set up port mappings or use other similar methods. The screenshots above show examples of this facility.

UPNP Service Setup



The UPnP facility on the Vigor router enables UPnP aware applications such as MSN Messenger to discover what are behind a NAT router, learn the external IP address and configure port mappings on the router. Subsequently, such a facility forwards packets from the external ports of the router to the internal ports used by the application.

