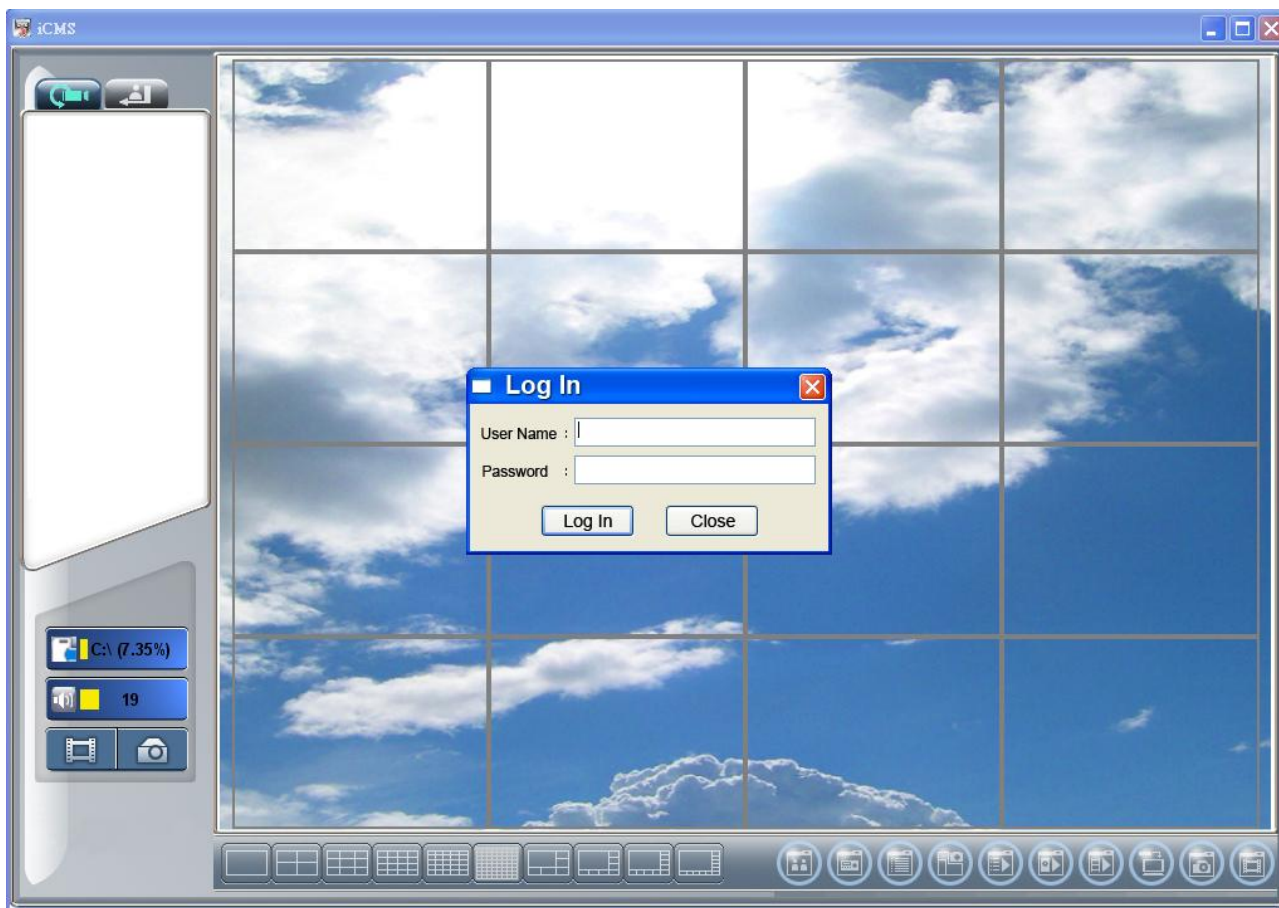
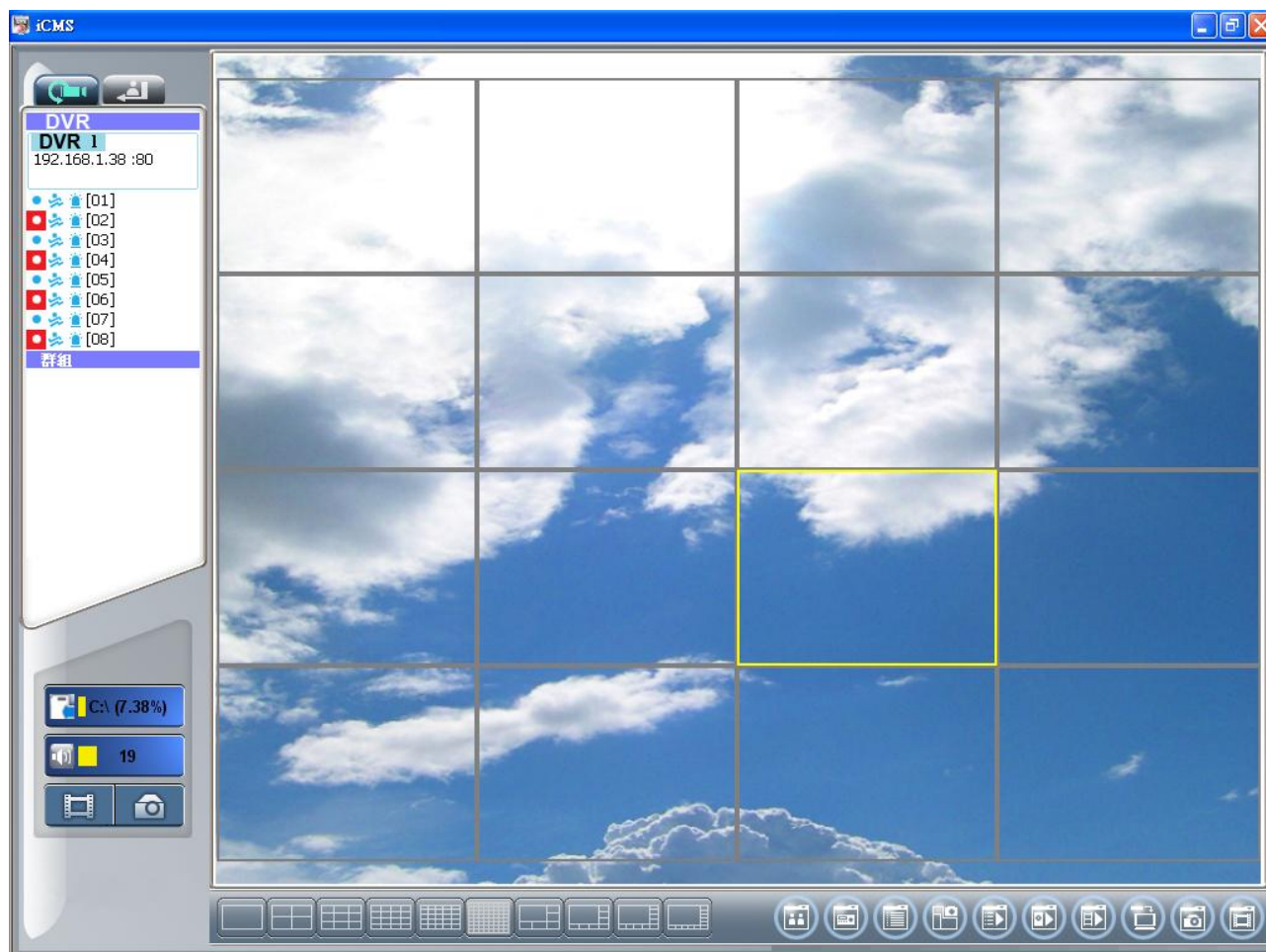


## How to use IVS

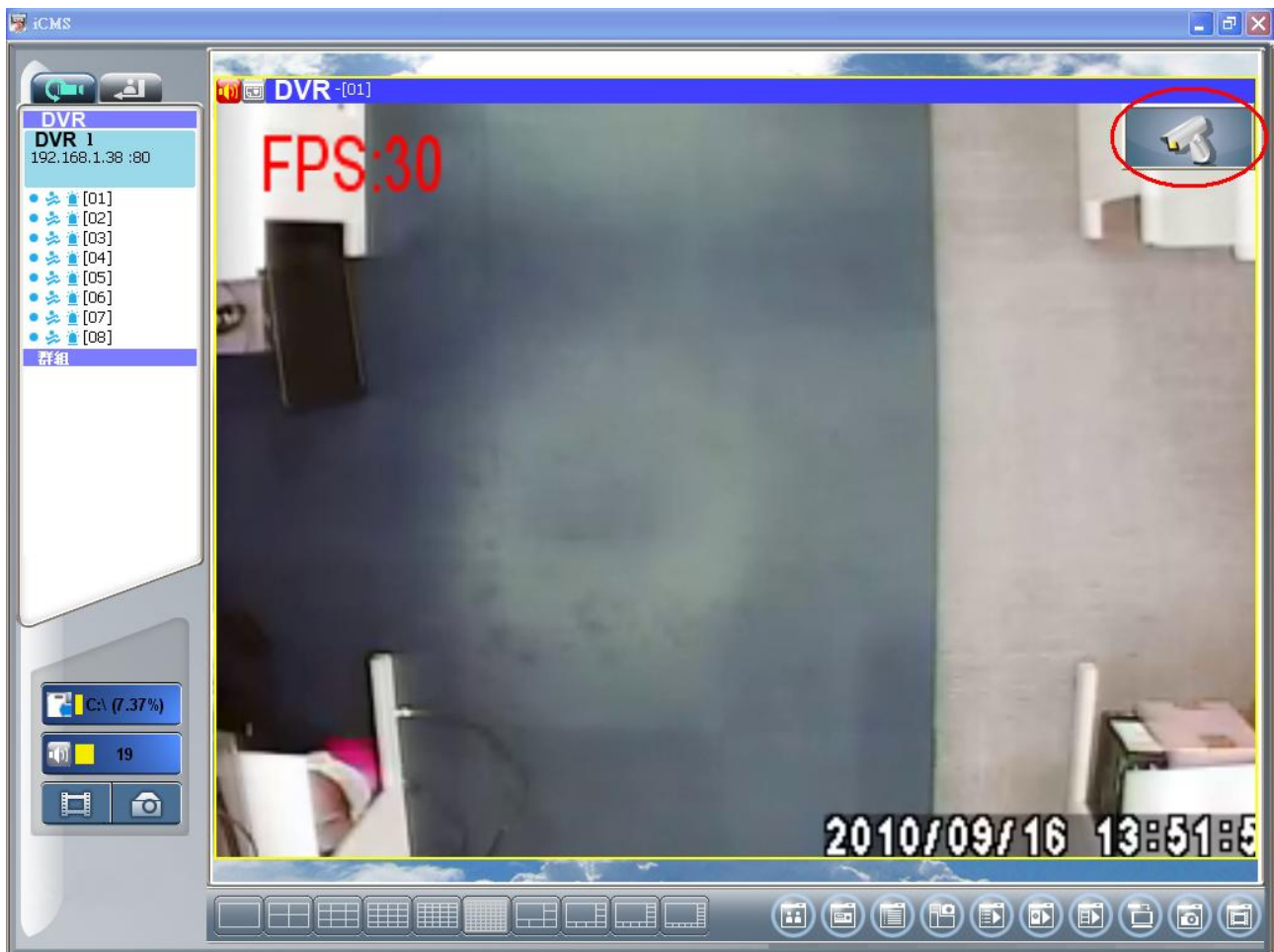
1. Log in CMS system with user account “admin” and password “123456”



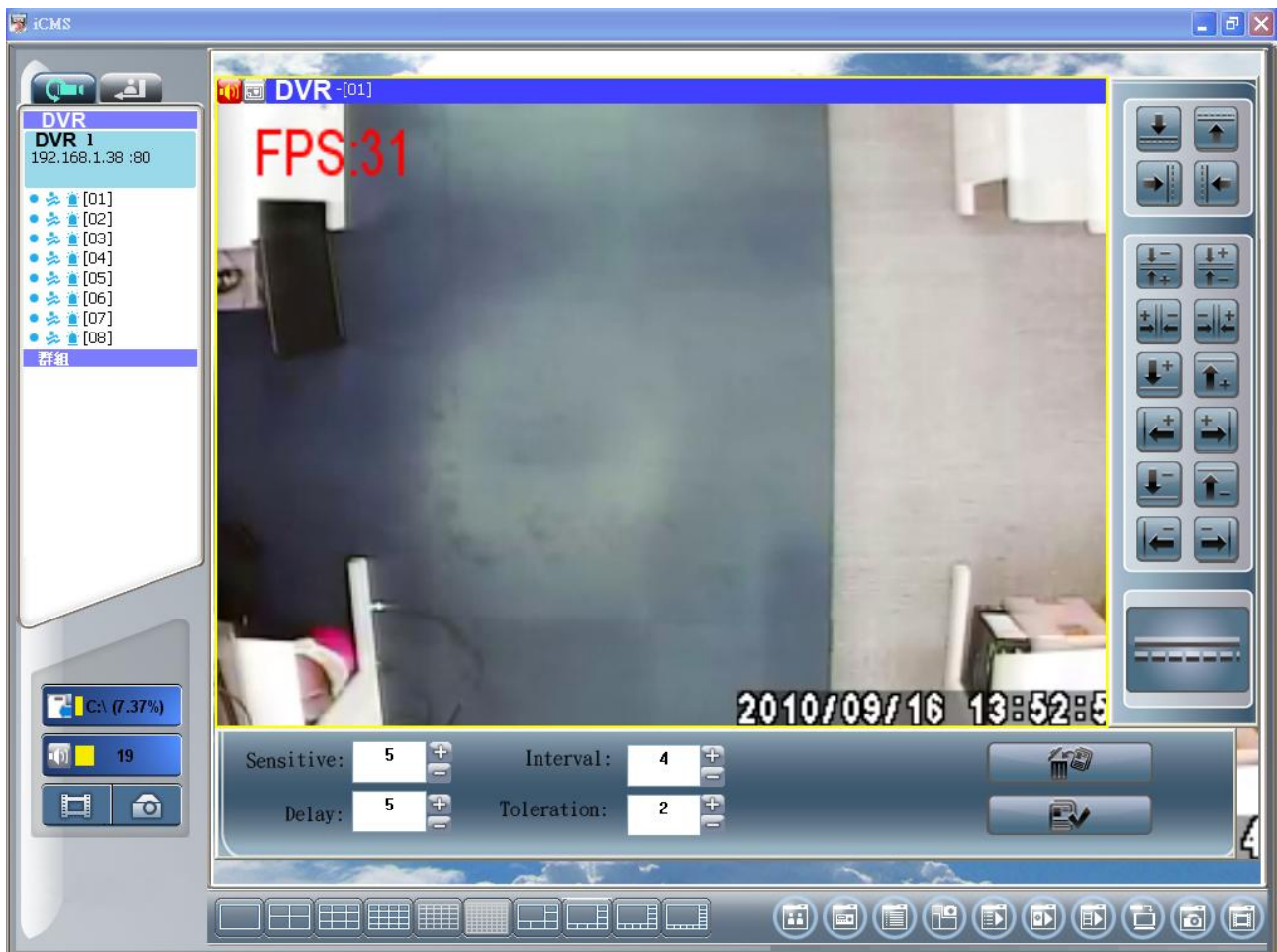
2. After log in, appears following screen:



3. Select the channel you need, click the camera in red circle, active IVS system.






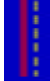




4. IVS system screen appears.

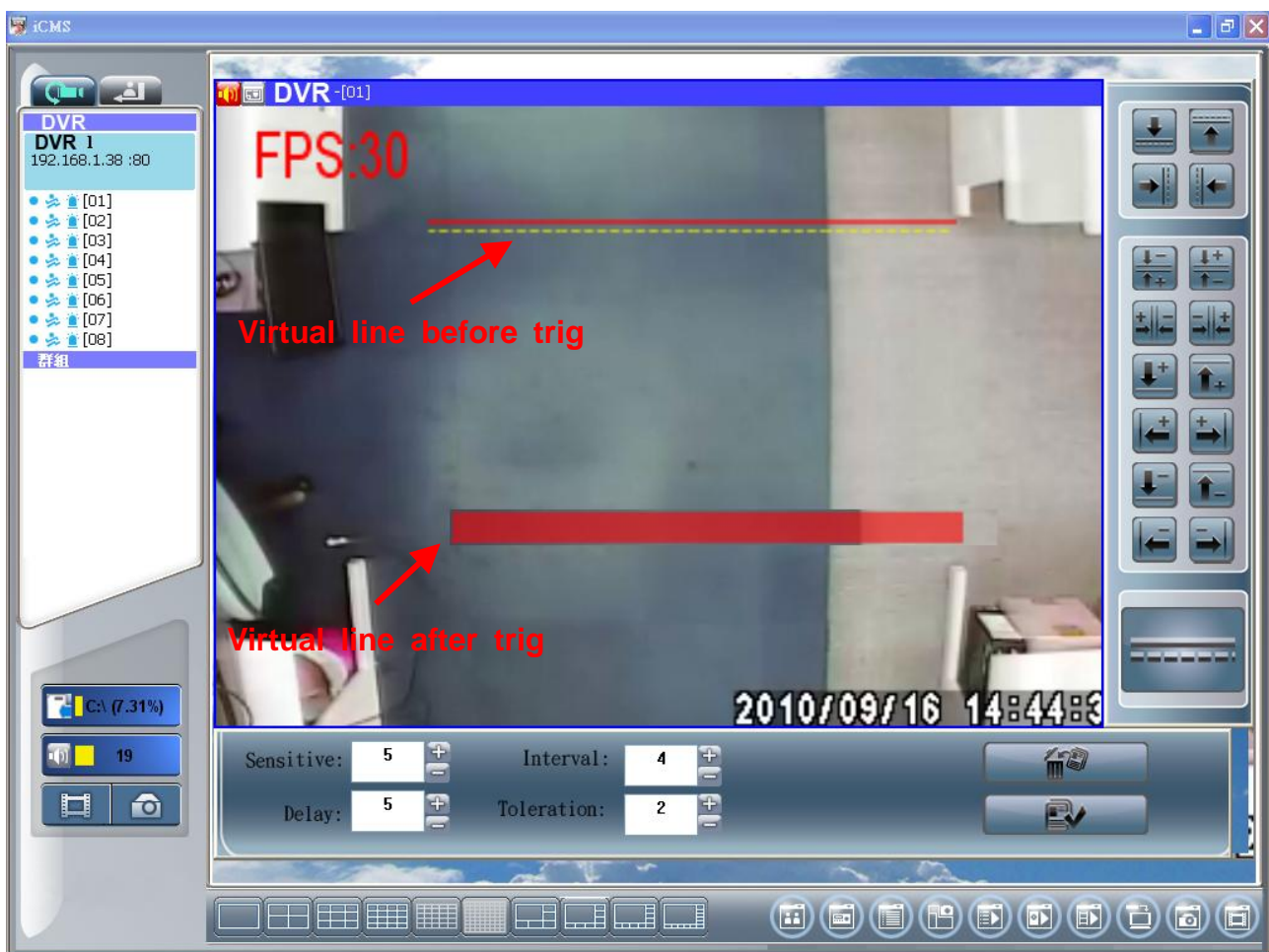


## 5. User instruction

### A. Electronic Security Fence

Icon	Virtual Line	Description
		Moving from top to down direction, trig the alarm
		Moving from down to top direction, trig the alarm
		Moving from left to right direction, trig the alarm
		Moving from right to left direction, trig the alarm









Example : Click 



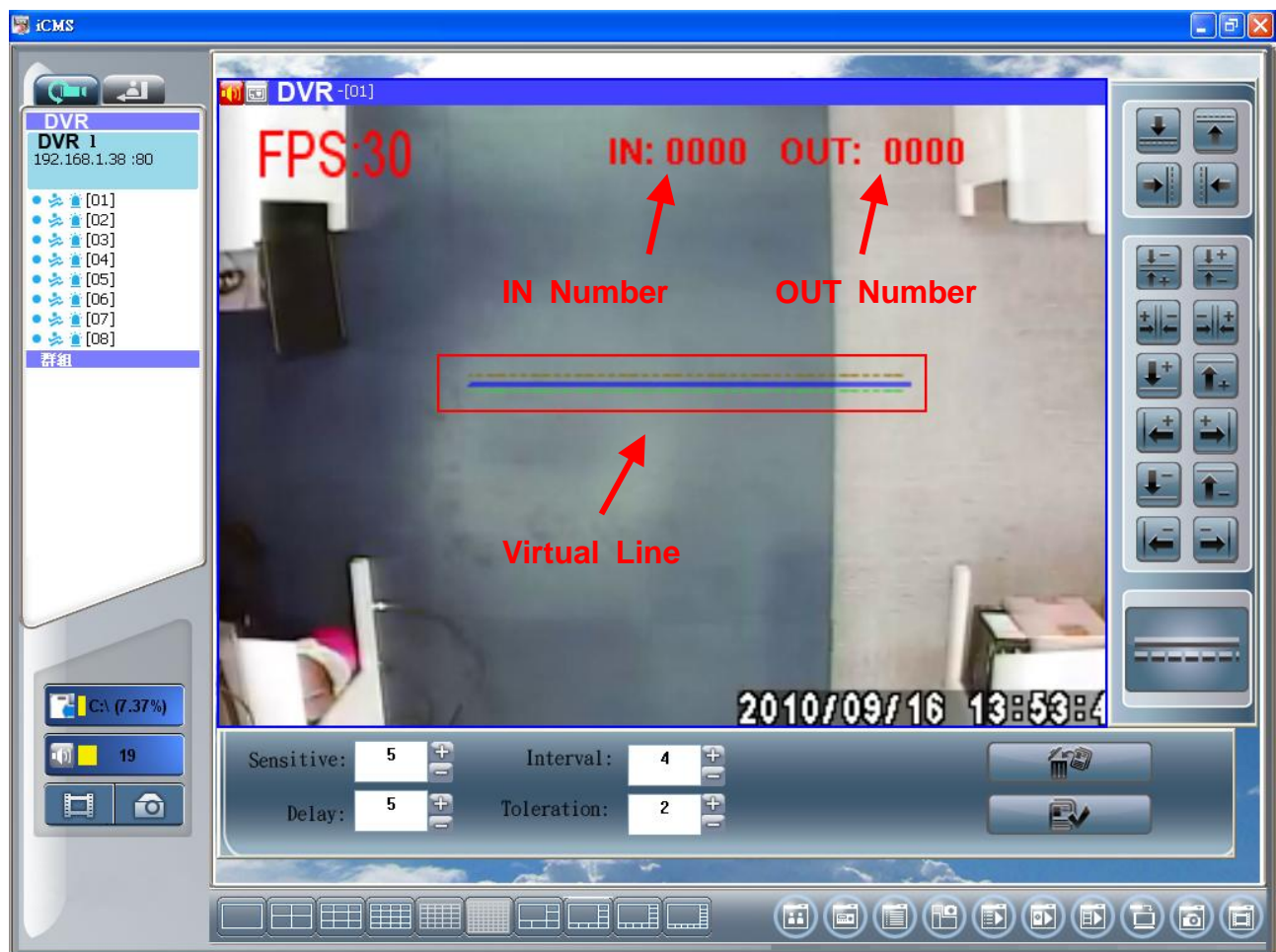


## B. People counting









### a. Two-Way Statistics

Icon	Virtual Line	Description
		I . Moving from down to top direction, count IN II.Moving from top to down direction, count OUT
		I .Moving from top to down direction, count IN II. Moving from down to top direction, count OUT
		I . Moving from left to right direction, count IN II. Moving from right to left direction, count OUT
		I . Moving from right to left direction, count IN II. Moving from left to right direction, count OUT

Example : Click

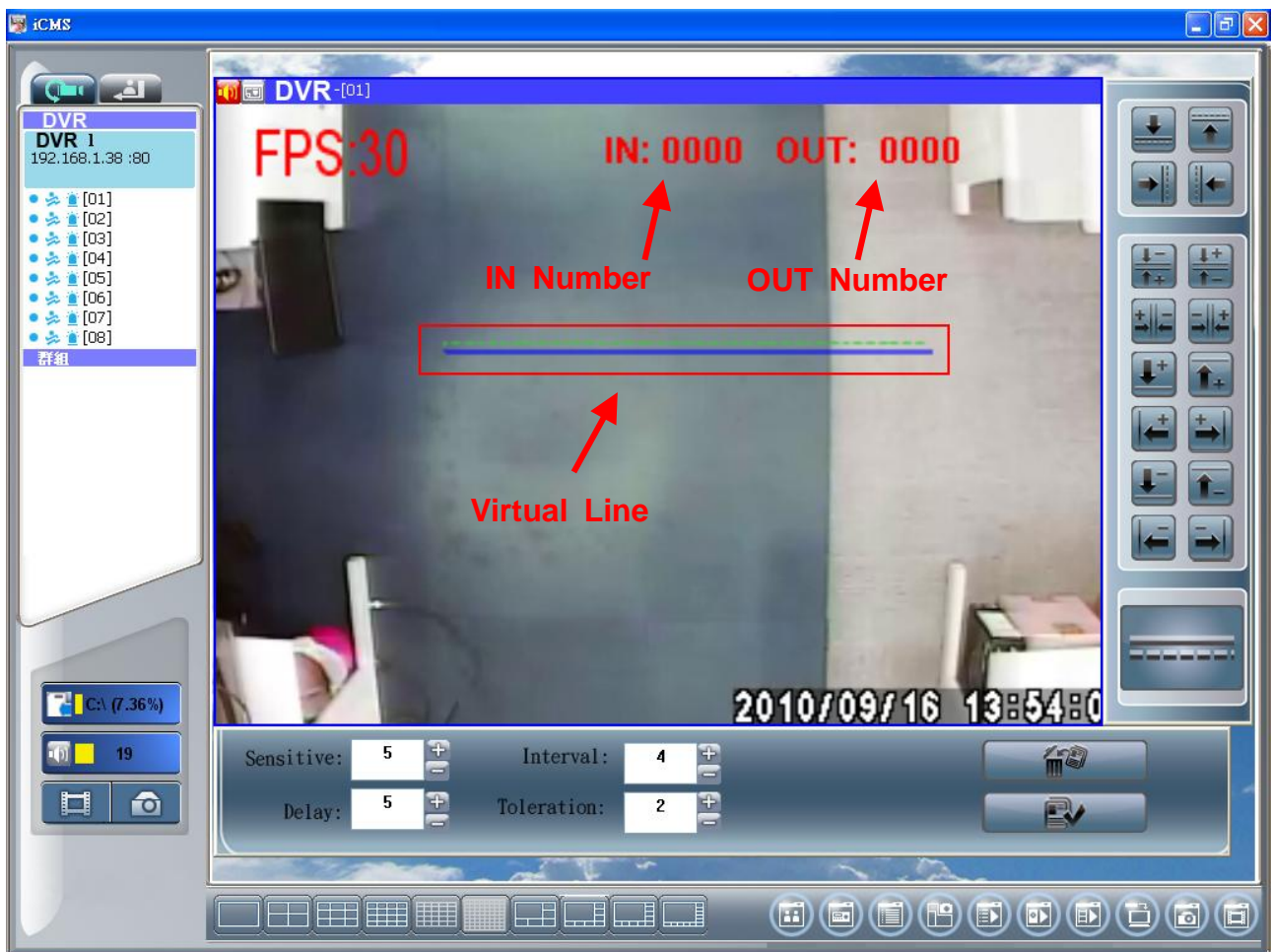


b. One-Way Statistics IN









		Moving from top to down direction, count IN
		Moving from down to top direction, count IN
		Moving from right to left direction, count IN
		Moving from left to right direction, count IN



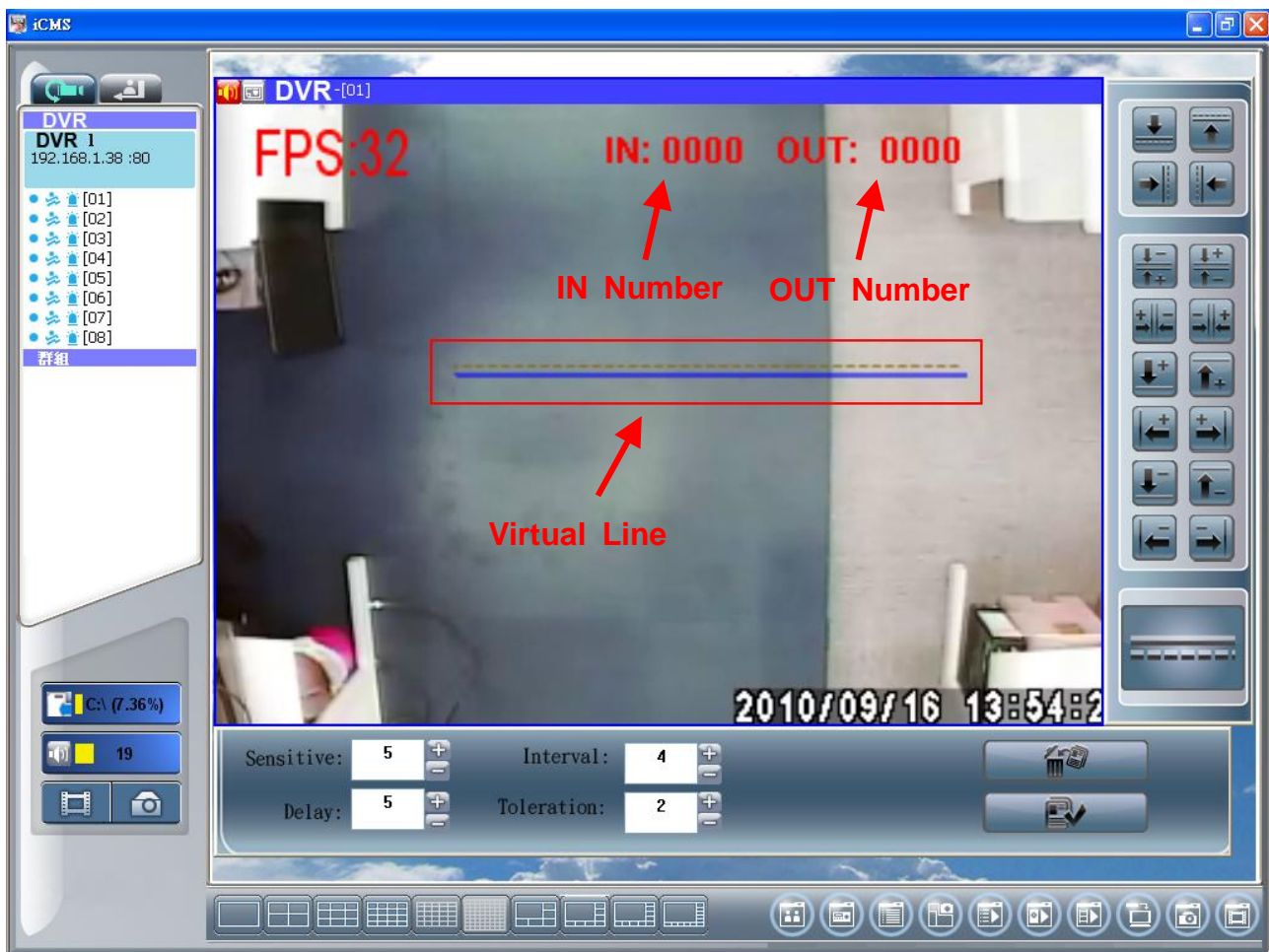
Example : Click



### c. One-Way Statistics OUT








		.Moving from top to down direction, count OUT
		Moving from down to top direction, count OUT
		Moving from right to left direction, count OUT
		Moving from left to right direction, count OUT

Example : Click

The screenshot displays the iCMS software interface. On the left, a sidebar shows a list of DVR channels (DVR 1, 192.168.1.38 :80) and a group of channels (01-08). The main window shows a video feed from a DVR channel (DVR-[01]). Overlaid on the video feed are several statistics: FPS:32, IN: 0000, OUT: 0000, IN Number, and OUT Number. A red box highlights a horizontal line across the video feed, labeled "Virtual Line". The bottom of the interface shows a control panel with settings for Sensitive (5), Interval (4), Delay (5), and Toleration (2). The date and time are displayed as 2010/09/16 13:54:2.

### 3. Others function

Icon	Description
	Setup Virtual line display or hide
	Sensitivity: Lower the number, shorten the detection distance but more the practices Range : 1~100 【5】 ◦ Need to match with the interval (Interval High → Sensitive low , Interval low → Sensitive High) ◦
	Delay : Display staying Time ( Electronic Security Fence Warning ) ◦ 1~600 Range : 1~600 【5】
	In seconds , detect more Frames ( More number , share CPU more performance) Range : 1~25 【4】
	Toleration : Filter out other interference factors, such like flashing lights may cause misjudgment Range : 1~99 【2】
	Delete Detection Setup
	Save Detection Setup